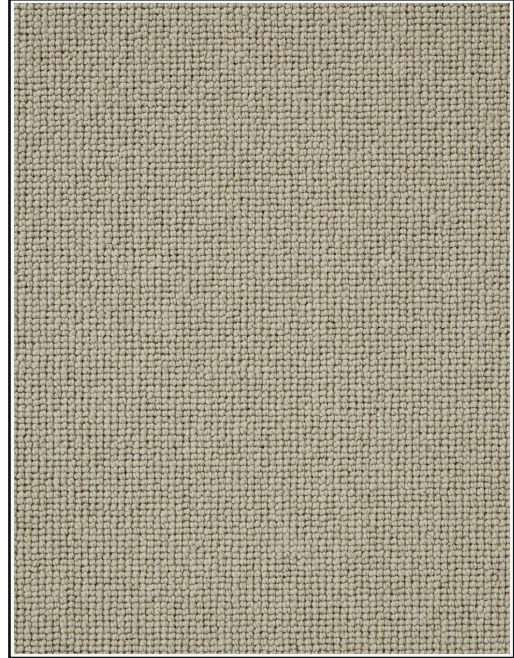


## Belgravia - Fawn

### Product Description

Our stunning Belgravia range is expertly made from 50% New Zealand wool, this wonderful carpet is hardwearing and easy to maintain with its durable loop pile which is available in three popular designs Level, Textured and Striped. Belgravia provides all the benefits of a wool carpet, pair this with our fantastic warranties for your added peace of mind! Complete with a hard wearing woven backing, this carpet is comfortable underfoot whilst offering enhanced warmth.



Range Details	Properties	Technical Data	Technical Specification
Construction	50% Wool, 50% Polypropylene	Fire Certification	Dfl-S1
Pile Type	Loop	Water Fastness	4/5 on all colours
Primary Backing	Woven Polypropylene	Light Fastness	5 on all colours
Secondary Backing	Woven Secondary	Slip Resistance	DS
Pile Height (mm)	4.3mm	Machine Guage	5/32nd Loop
Total Height (mm)	7.7mm	Tog Rating	1
Pile Weight (gr/m2)	1,153 gms/m2	Thermal Resistance	0.1 m2k/w
Total Weight (gr/m2)	2,189 gms/m2	Bleach Cleanable	No
Roll Width (m)	4 & 5 Metres	VOC Emissions Rating	E1
Pattern Measurement			
Country of Origin	UK		

Installation Guidance	Properties
Recommended Underlay	High Density 11mm Underlay
Suitable for Underfloor Heating?	Yes - combined tog must not exceed 2.5

### Room Suitability

